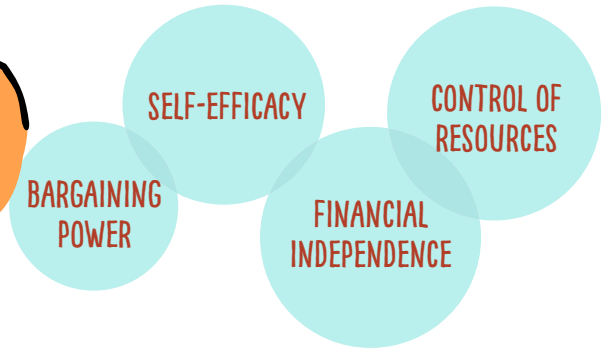
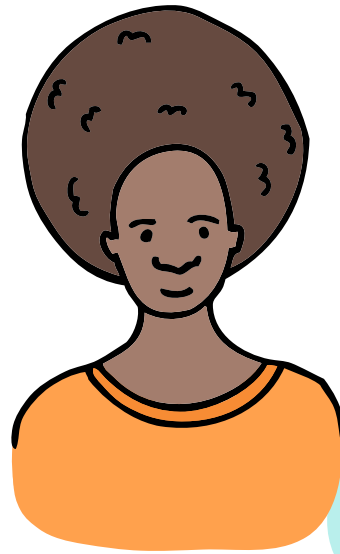


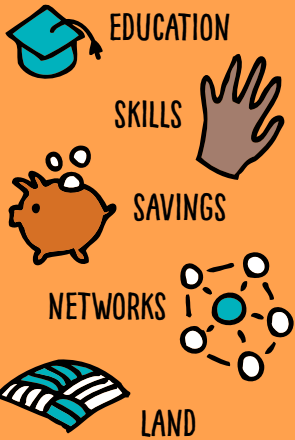
AGENCY

IS A WOMAN'S ABILITY TO DEFINE AND MAKE THE CHOICES IN HER LIFE.



TO FOSTER AGENCY, WOMEN NEED...

ACCESS TO RESOURCES



SUPPORTIVE SOCIAL NORMS



SUPPORTIVE INSTITUTIONS



COMMUNITIES HAVE TO **TRUST** WOMEN AND ENABLE THEM TO MAKE THEIR **OWN DECISIONS.**

WHO CAN FOSTER AGENCY?

MEN, WOMEN, GOVERNMENT LEADERS, BUSINESS OWNERS, TEACHERS, FUNDERS, NGOS, **ANYONE!**

